



**NAVELINK**

Issued by	Date		
Conceptual team	2021-04-12		
Approved by	Classification		
M Olofsson	Consortium Unclassified Released Public		

# Navelink Industry Consortium

## HOW-TO Hire service in Navelink VIS Hotel

[Navelink.org](https://navelink.org)

DocId: 0140  
Version: v0.1

This document and the information herein is the property of Navelink and must not be used, disclosed or altered without Navelink prior written consent.

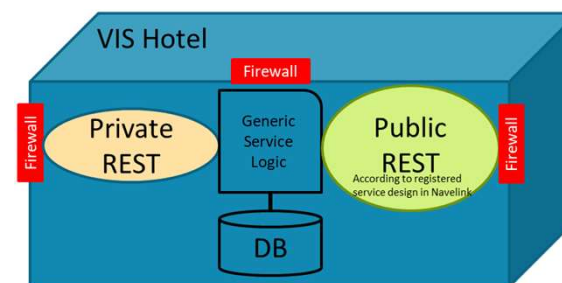
# Introduction

The purpose of this document is to provide detailed information for how to connect and maintain a service instance in the Navelink Service (VIS) Hotel.

If you are in a hurry, go to last slide for details!

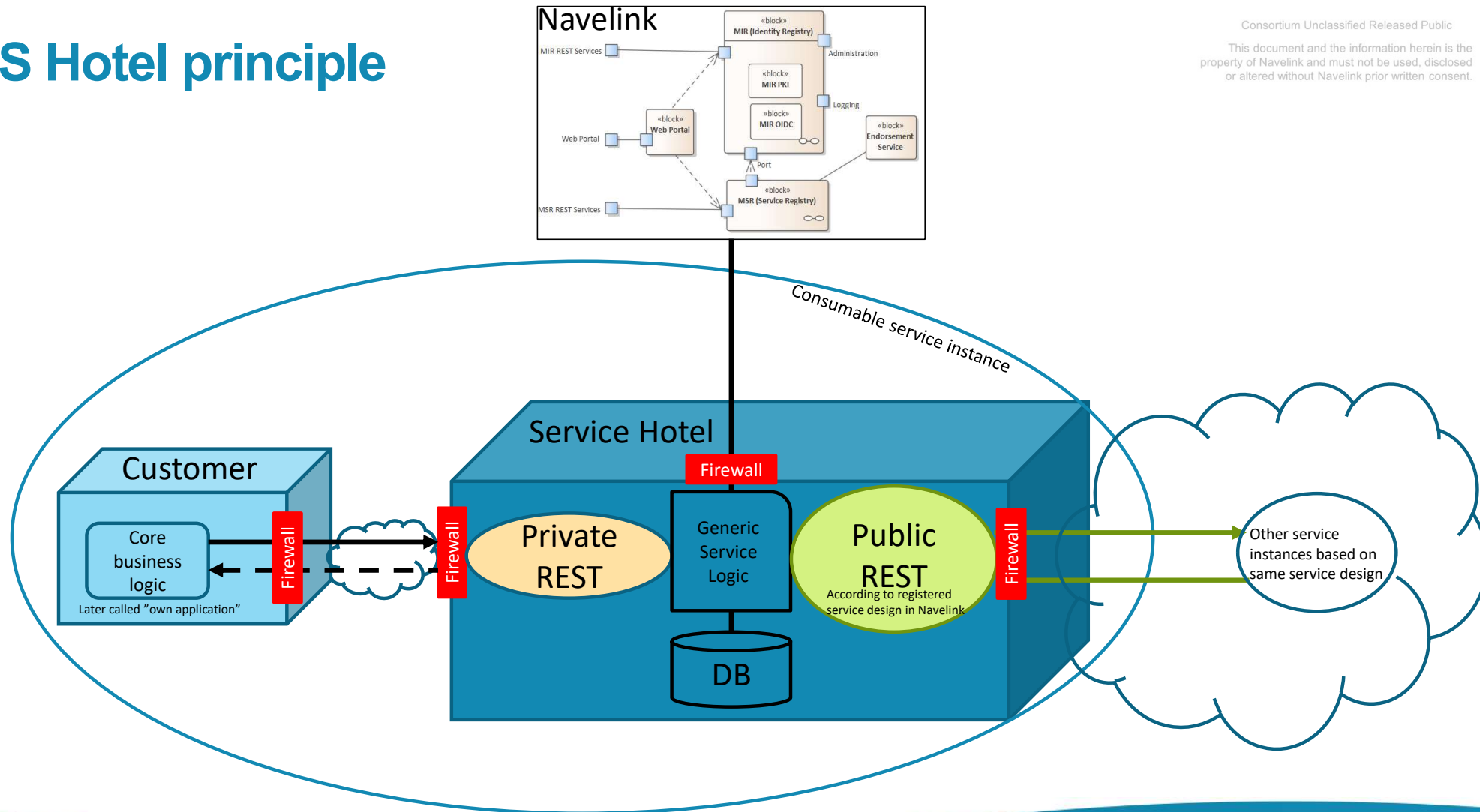
Consortium Unclassified Released Public

This document and the information herein is the property of Navelink and must not be used, disclosed or altered without Navelink prior written consent.



# VIS Hotel principle

Consortium Unclassified Released Public  
This document and the information herein is the property of Navelink and must not be used, disclosed or altered without Navelink prior written consent.



# Responsibility, contracts etc.

## Customer responsibility:

- Responsible for the core business (operational) logic behind the service instance.
- Responsible for the availability and performance of own application
- Responsible for the information security on own application.
- Responsible for the output from the service instance
- Responsible for the registration of service instance in Navelink.
  
- Responsible for upholding agreed contract for the hosting of service instance in Navelink.

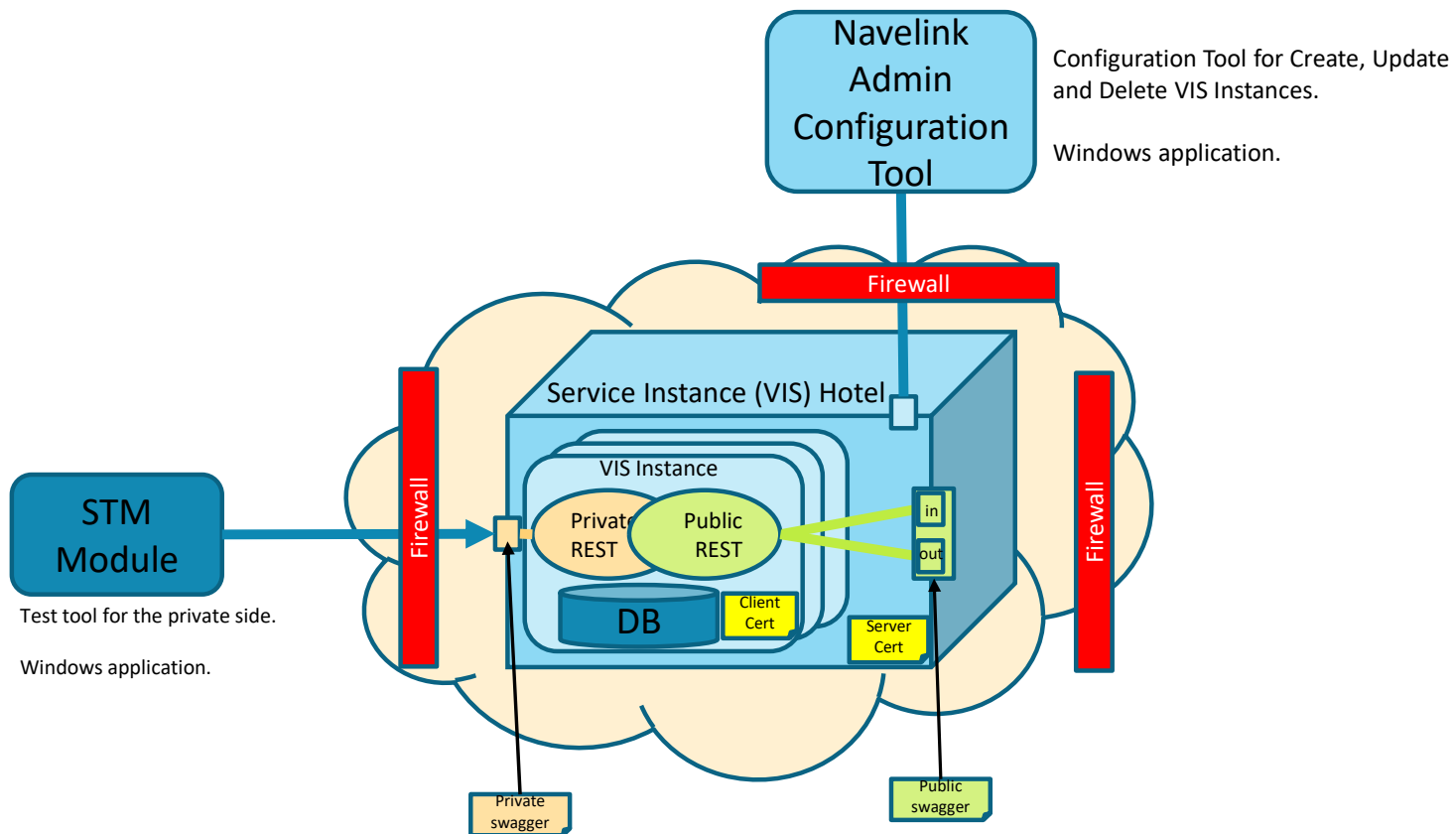
## Navelink responsibility:

- Responsible for the availability and performance of the generic (VIS) service instance.
- Responsible for the information security to and from the private side.
- Responsible for the information security to and from the public side.
- Responsible for the technical interoperability of the public side (public REST service).
- Responsible for the host certificate (Navelink generated Let's Encrypt if not otherwise agreed)
- Responsible for the configuration of the service instance.

# Logical Architecture

Consortium Unclassified Released Public

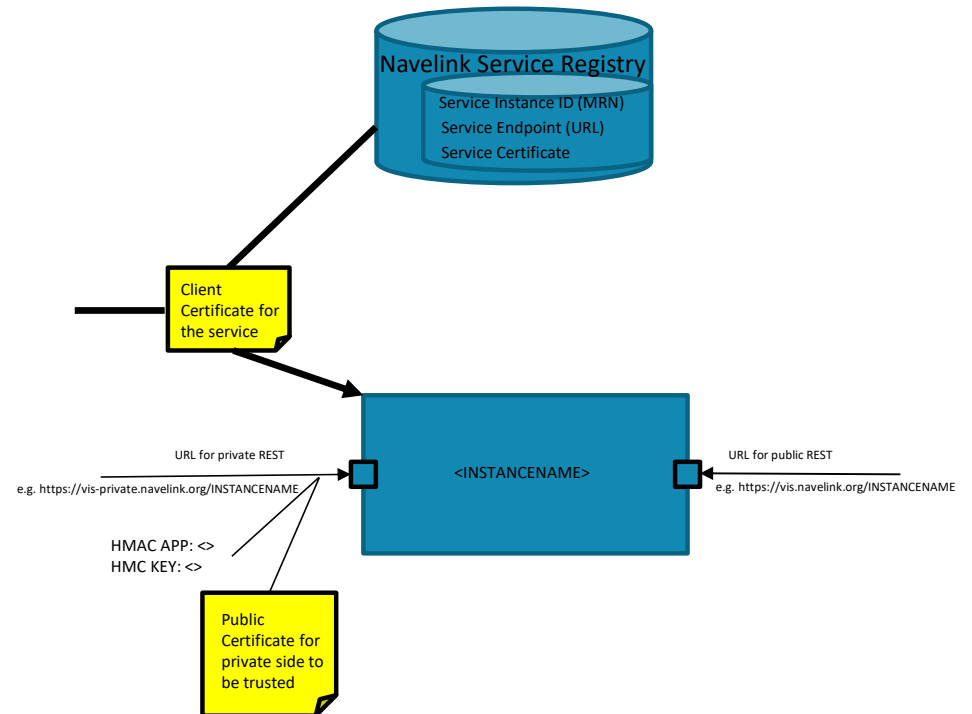
This document and the information herein is the property of Navelink and must not be used, disclosed or altered without Navelink prior written consent.



# Configurations and details

The following tasks need to be executed:

1. Establish contact and contract with Navelink: <mailto:info@navelink.org>
2. Navelink need the following information before creating the instance in the hotel.
  1. MRN on the in Navelink Service Registry registered service instance. The MRN will also reflect the environment (dev, test or ops). Navelink will then create the URL and also connect the correct client certificate to the service.
  2. Optional: Your Notification URL (if you allow incoming notification, otherwise use polling of getNotification/getMessage)
3. Navelink will send back
  1. Public URL to the new created service instance to be added in the service instance registration in Navelink Service Registry
  2. Private URL to the new created service instance **OBS! It will be on port 443 and a different domain than the public side**
  3. HMAC keys for the private side
4. Test Tools, Test Data and Test Cases
  1. Checklist and Test protocol
  2. Swagger file for the VIS Instance private side.





**NAVELINK**

[navelink.org](http://navelink.org)

[info@navelink.org](mailto:info@navelink.org)